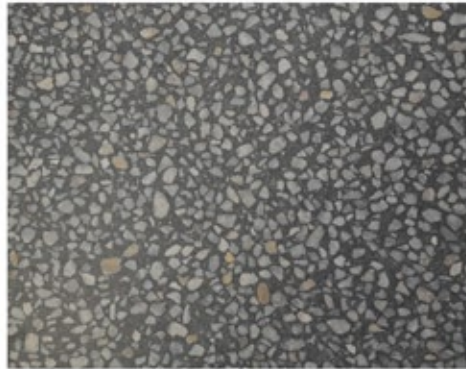
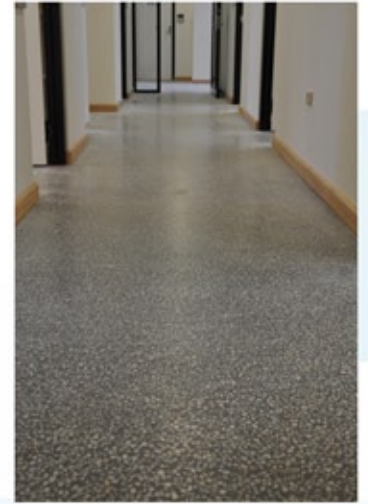


# Project Case Study

## Project

### Noarlunga GP Plus Polished Concrete



## Project Summary

Substrate

New Concrete

Surface Preparation

Grinding

System

Hyper Floor Polish & Seal

## Project Description

The South Australian Government is reforming the state's public health care system to keep South Australians healthy and out of hospital.

Part of this reform process involved new investment in major hospitals, promotion of healthier lifestyles and illness prevention through the building of new GP Plus Health Care Centres.

Poly-Tech have been a key construction partner to help realise these reforms by assisting with the creation of these magnificent GP Plus Centres across SA.

Our highly skilled team members and our state of the art concrete diamond grinders have many effective uses and will get you the finish you desire.

For an exposed aggregate polished concrete finish, the concrete is ground approximately 10 days following its pour to remove approximately 5mm from the surface thus exposing the internal aggregates and mix.

Cured concrete can be lightly ground with one or more passes with the grinders to offer the warehouse style polished concrete revealing little to no aggregate.

All reputable concrete manufacturer's have designer batches to provide numerous colours and effects. Both of these styles can then be protected in many ways from applying a penetrating sealer, epoxy resins or satin/gloss urethanes.

Poly-Tech will always welcome discussion with concreters to suggest ways of producing an ideal surface ready for polished concrete.

The concrete protection & restoration specialists  
South Australia, Tasmania, Northern Territory & Victoria